

Dell Vostro 3555 Owner's Manual

Regulatory Model P16F
Regulatory Type P16F002



Notes, Cautions, and Warnings



NOTE: A NOTE indicates important information that helps you make better use of your computer.



CAUTION: A CAUTION indicates potential damage to hardware or loss of data if instructions are not followed.



WARNING: A WARNING indicates a potential for property damage, personal injury, or death.

Information in this publication is subject to change without notice.

© 2011 Dell Inc. All rights reserved.

Reproduction of these materials in any manner whatsoever without the written permission of Dell Inc. is strictly forbidden.

Trademarks used in this text: Dell™, the DELL logo, Dell Precision™, Precision ON™, ExpressCharge™, Latitude™, Latitude ON™, OptiPlex™, Vostro™, and Wi-Fi Catcher™ are trademarks of Dell Inc. Intel®, Pentium®, Xeon®, Core™, Atom™, Centrino®, and Celeron® are registered trademarks or trademarks of Intel Corporation in the U.S. and other countries. AMD® is a registered trademark and AMD Opteron™, AMD Phenom™, AMD Sempron™, AMD Athlon™, ATI Radeon™, and ATI FirePro™ are trademarks of Advanced Micro Devices, Inc. Microsoft®, Windows®, MS-DOS®, Windows Vista®, the Windows Vista start button, and Office Outlook® are either trademarks or registered trademarks of Microsoft Corporation in the United States and/or other countries. Blu-ray Disc™ is a trademark owned by the Blu-ray Disc Association (BDA) and licensed for use on discs and players. The Bluetooth® word mark is a registered trademark and owned by the Bluetooth® SIG, Inc. and any use of such mark by Dell Inc. is under license. Wi-Fi® is a registered trademark of Wireless Ethernet Compatibility Alliance, Inc.

Other trademarks and trade names may be used in this publication to refer to either the entities claiming the marks and names or their products, Dell Inc. disclaims any proprietary interest in trademarks and trade names other than its own.

2011 – 08

Rev. A00

Contents

Notes, Cautions, and Warnings	2
1 Working on Your Computer	9
Before Working Inside Your Computer.....	9
Recommended Tools.....	10
Turning Off Your Computer.....	11
After Working Inside Your Computer.....	11
2 Battery	13
Removing The Battery.....	13
Installing The Battery.....	14
3 Memory Card	15
Removing The Memory Card.....	15
Installing The Memory Card.....	16
4 Subscriber Identity Module (SIM) Card	17
Removing The Phone Subscriber Identity Module (SIM).....	17
Installing The Phone Subscriber Identity Module (SIM).....	18
5 Access Panel	19
Removing The Access Panel.....	19
Installing The Access Panel.....	20
6 Memory	21
Removing The Memory Module.....	21
Installing The Memory Module.....	22
7 Optical Drive	23
Removing The Optical Drive.....	23

Installing The Optical Drive.....	24
8 Hard Drive.....	25
Removing The Hard Drive.....	25
Installing The Hard Drive.....	26
9 ExpressCard.....	27
Removing The ExpressCard.....	27
Installing The ExpressCard.....	28
10 ExpressCard Board.....	29
Removing The ExpressCard Board.....	29
Installing The ExpressCard Board.....	31
11 Wireless Wide Area Network (WWAN) Card.....	33
Removing The Wireless Wide Area Network (WWAN) Card.....	33
Installing The Wireless Wide Area Network (WWAN) Card.....	34
12 Keyboard.....	35
Removing The Keyboard.....	35
Installing The Keyboard.....	37
13 Wireless Local Area Network (WLAN) Card.....	39
Removing The Wireless Local Area Network (WLAN) Card.....	39
Installing The Wireless Local Area Network (WLAN) Card.....	40
14 Palm Rest.....	41
Removing The Palm Rest.....	41
Installing The Palm Rest.....	46
15 Fingerprint Reader.....	47
Removing The Fingerprint Reader.....	47
Installing The Fingerprint Reader.....	49

16 Hold Switch	51
Removing The Hold Switch.....	51
Installing The Hold Switch.....	51
17 Speaker	53
Removing The Speakers.....	53
Installing The Speakers.....	55
18 Power-Button Board	57
Removing The Power-Button Board.....	57
Installing The Power-Button Board.....	58
19 Quick Launch Button Board	59
Removing The Quick-Launch Button Board.....	59
Installing The Quick Launch Button Board.....	60
20 Coin-Cell Battery	61
Removing The Coin-Cell Battery.....	61
Installing The Coin-Cell Battery.....	61
21 Heat Sink	63
Removing The Heatsink.....	63
Installing The Heatsink.....	65
22 Processor	67
Removing The Processor.....	67
Installing The Processor.....	68
23 Display Assembly	69
Removing The Display Assembly.....	69
Installing The Display Assembly.....	72
24 Display Bezel	73
Removing The Display Bezel.....	73

Installing The Display Bezel.....	74
25 Camera.....	75
Removing The Camera.....	75
Installing The Camera.....	77
26 Display Brackets and Hinges.....	79
Removing The Display Brackets, Hinges And Panel.....	79
Installing The Display Brackets, Hinges and Panel.....	83
27 System Board.....	85
Removing The System Board.....	85
Installing The System Board.....	87
28 Left Input/Output Board.....	89
Removing The Left And The Right Input/Output (I/O) Board.....	89
Installing The Left And The Right Input/Output (I/O) Board.....	91
29 Right Input/Output Board.....	93
Removing The Right Input/Output (I/O) Board.....	93
Installing The Right Input/Output (I/O) Board.....	95
30 System Setup.....	97
System Setup Overview.....	97
System Setup Enter.....	97
System Setup Screens.....	97
System Setup Options.....	99
31 Diagnostics.....	103
Device Status Lights.....	103
Battery Status Lights.....	103
Diagnostic Beep Codes.....	103

32 Specifications.....	105
33 Contacting Dell.....	115
Contacting Dell.....	115


Working on Your Computer


1


Before Working Inside Your Computer


Use the following safety guidelines to help protect your computer from potential damage and to help to ensure your personal safety. Unless otherwise noted, each procedure included in this document assumes that the following conditions exist:


- You have performed the steps in Working on Your Computer.
- You have read the safety information that shipped with your computer.
- A component can be replaced or--if purchased separately--installed by performing the removal procedure in reverse order.

 **WARNING:** Before working inside your computer, read the safety information that shipped with your computer. For additional safety best practices information, see the Regulatory Compliance Homepage at www.dell.com/regulatory_compliance.

 **CAUTION:** Many repairs may only be done by a certified service technician. You should only perform troubleshooting and simple repairs as authorized in your product documentation, or as directed by the online or telephone service and support team. Damage due to servicing that is not authorized by Dell is not covered by your warranty. Read and follow the safety instructions that came with the product.

 **CAUTION:** To avoid electrostatic discharge, ground yourself by using a wrist grounding strap or by periodically touching an unpainted metal surface, such as a connector on the back of the computer.

 **CAUTION:** Handle components and cards with care. Do not touch the components or contacts on a card. Hold a card by its edges or by its metal mounting bracket. Hold a component such as a processor by its edges, not by its pins.

 **CAUTION:** When you disconnect a cable, pull on its connector or on its pull-tab, not on the cable itself. Some cables have connectors with locking tabs; if you are disconnecting this type of cable, press in on the locking tabs before you disconnect the cable. As you pull connectors apart, keep them evenly aligned to avoid bending any connector pins. Also, before you connect a cable, ensure that both connectors are correctly oriented and aligned.



NOTE: The color of your computer and certain components may appear differently than shown in this document.

To avoid damaging your computer, perform the following steps before you begin working inside the computer.

1. Ensure that your work surface is flat and clean to prevent the computer cover from being scratched.
2. Turn off your computer (see *Turning Off Your Computer*).
3. If the computer is connected to a docking device (docked) such as the optional Media Base or Battery Slice, undock it.



CAUTION: To disconnect a network cable, first unplug the cable from your computer and then unplug the cable from the network device.

4. Disconnect all network cables from the computer.
5. Disconnect your computer and all attached devices from their electrical outlets.
6. Close the display and turn the computer upside-down on a flat work surface.



NOTE: To avoid damaging the system board, you must remove the main battery before you service the computer.

7. Remove the main battery.
8. Turn the computer top-side up.
9. Open the display.
10. Press the power button to ground the system board.



CAUTION: To guard against electrical shock, always unplug your computer from the electrical outlet before opening the display.



CAUTION: Before touching anything inside your computer, ground yourself by touching an unpainted metal surface, such as the metal at the back of the computer. While you work, periodically touch an unpainted metal surface to dissipate static electricity, which could harm internal components.

11. Remove any installed ExpressCards or Smart Cards from the appropriate slots.


Recommended Tools

The procedures in this document may require the following tools:

- Small flat-blade screwdriver


- #0 Phillips screwdriver
- #1 Phillips screwdriver
- Small plastic scribe
- Flash BIOS update program CD

Turning Off Your Computer

 **CAUTION: To avoid losing data, save and close all open files and exit all open programs before you turn off your computer.**

1. Shut down the operating system:

- In Windows Vista :

Click **Start** , then click the arrow in the lower-right corner of the **Start** menu as shown below, and then click **Shut Down**.



- In Windows XP:

Click **Start** → **Turn Off Computer** → **Turn Off** . The computer turns off after the operating system shutdown process is complete.

2. Ensure that the computer and all attached devices are turned off. If your computer and attached devices did not automatically turn off when you shut down your operating system, press and hold the power button for about 4 seconds to turn them off.

After Working Inside Your Computer

After you complete any replacement procedure, ensure you connect any external devices, cards, and cables before turning on your computer.

 **CAUTION: To avoid damage to the computer, use only the battery designed for this particular Dell computer. Do not use batteries designed for other Dell computers.**

1. Connect any external devices, such as a port replicator, battery slice, or media base, and replace any cards, such as an ExpressCard.
2. Connect any telephone or network cables to your computer.

 **CAUTION: To connect a network cable, first plug the cable into the network device and then plug it into the computer.**

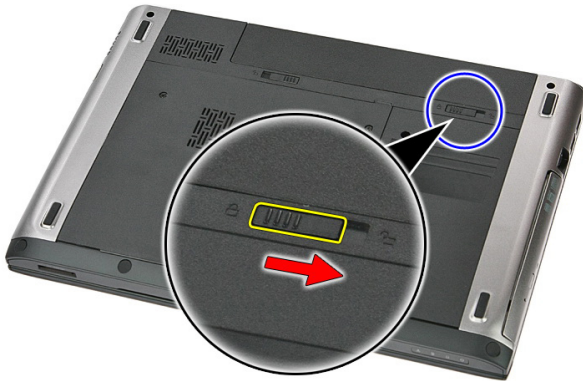
3. Replace the battery.
4. Connect your computer and all attached devices to their electrical outlets.
5. Turn on your computer.

Battery

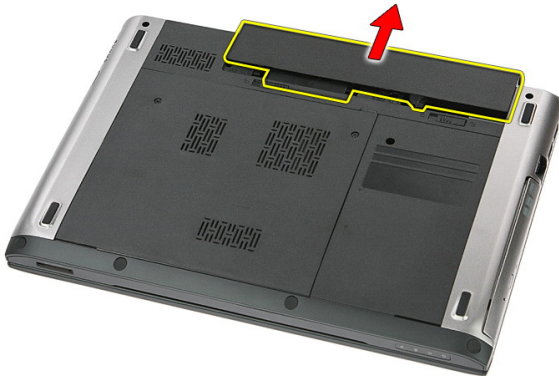
2

Removing The Battery

1. Follow the procedures in *Before Working On Your Computer*.
2. Slide the release latches to unlock the battery.



3. Slide the battery and remove it from the computer.



Installing The Battery

1. Slide the battery into its slot until it clicks into place.
2. Follow the procedures in *After Working Inside Your Computer*.

Memory Card

3

Removing The Memory Card

1. Follow the procedures in *Before Working On Your Computer*.
2. Press in on the memory card to release it from the computer.



3. Slide the memory card out of the computer.



Installing The Memory Card

1. Push the memory card into its slot until it clicks into place.
2. Follow the procedures in *After Working Inside Your Computer*.

Subscriber Identity Module (SIM) Card

4

Removing The Phone Subscriber Identity Module (SIM)

1. Follow the procedures in *Before Working On Your Computer*.
2. Remove the *battery*.
3. Press in on the SIM card to release it from the computer.



4. Grasp the SIM card and pull out to release it from the computer.



Installing The Phone Subscriber Identity Module (SIM)

1. Push the SIM card into the slot until it clicks into place.
2. Install the *battery*.
3. Follow the procedures in *After Working Inside Your Computer*.

Access Panel

5

Removing The Access Panel

1. Follow the procedures in *Before Working On Your Computer*.
2. Remove the *battery*.
3. Remove the screws that secure the access panel to the base of the computer.



4. Lift the access panel up at an angle and remove it from the computer.



Installing The Access Panel

1. Install the access panel on the back of the computer.
2. Tighten the screws to secure the access panel to the base of the system.
3. Install the *battery*.
4. Follow the procedures in *After Working Inside Your Computer*.

Memory

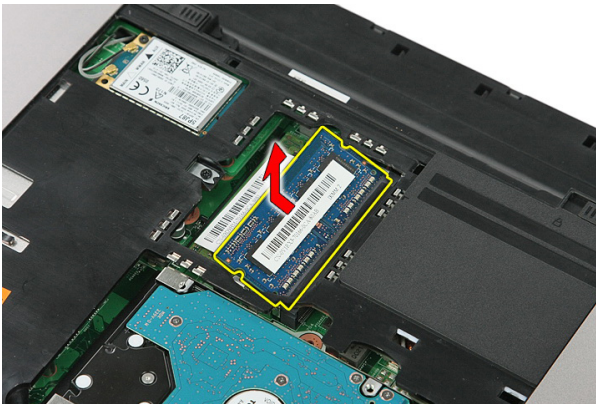
6

Removing The Memory Module

1. Follow the procedures in *Before Working On Your Computer*
2. Remove the *battery*.
3. Remove the *access panel*.
4. Pry the retention clips away from the memory module until it pops up.



5. Remove the memory module from its connector on the system board.



Installing The Memory Module

1. Insert the memory module into the memory socket.
2. Press the clips to secure the memory module to the system board.
3. Install the *access panel*.
4. Install the *battery*.
5. Follow the procedures in *After Working Inside Your Computer*.

Optical Drive

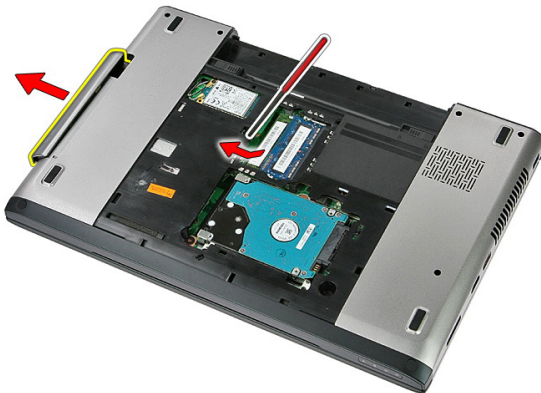
7

Removing The Optical Drive

1. Follow the procedures in *Before Working On Your Computer*
2. Remove the *battery*.
3. Remove the *access panel*.
4. Remove the screw that secures the optical drive.



5. Use a screwdriver to nudge the optical drive out of the computer.



Installing The Optical Drive

1. Slide the optical drive into the compartment on the left side of the chassis.
2. Tighten the screw to secure the optical drive to the computer.
3. Install the *access panel*.
4. Install the *battery*.
5. Follow the procedures in *After Working Inside Your Computer*.

Hard Drive

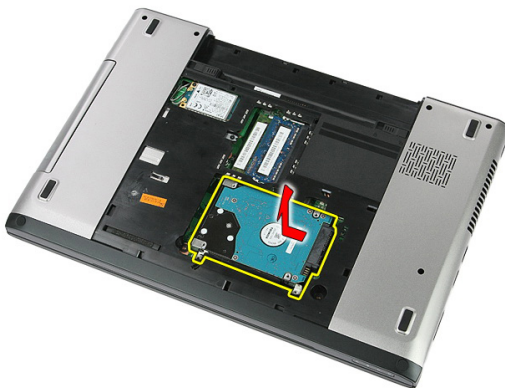
8

Removing The Hard Drive

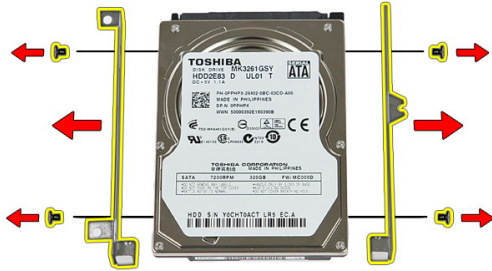
1. Follow the procedures in *Before Working On Your Computer*
2. Remove the *battery*.
3. Remove the *access panel*.
4. Remove the screws that secure the hard drive to the system.



5. Lift up the hard drive at an angle from the system and remove.



6. Remove the screws that secure the hard-drive bracket to the hard drive.



Installing The Hard Drive

1. Replace the screws to secure the hard-drive bracket to the hard drive.
2. Place the hard drive on the chassis.
3. Replace the screws to secure the hard drive to the system.
4. Install the *access panel*.
5. Install the *battery*.
6. Follow the procedures in *After Working Inside Your Computer*.

ExpressCard

Removing The ExpressCard

1. Follow the procedures in *Before Working On Your Computer*.
2. Remove the *battery*.
3. Press in on the ExpressCard and release.



4. Pull the ExpressCard out of the computer and remove.



Installing The ExpressCard

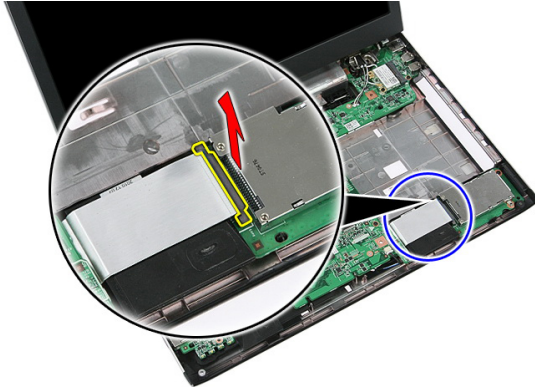
1. Push in the ExpressCard into the slot until clicks into place.
2. Install the *battery*.
3. Follow the procedures in *After Working Inside Your Computer*.

ExpressCard Board

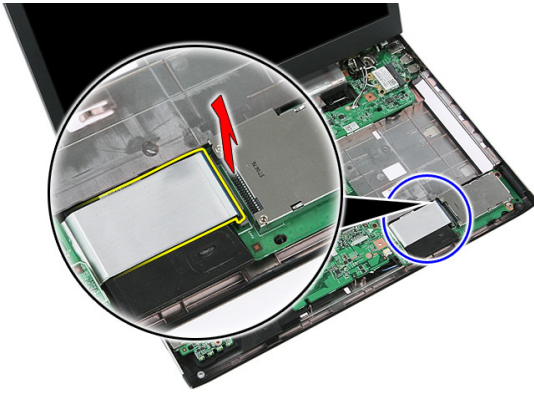
10

Removing The ExpressCard Board

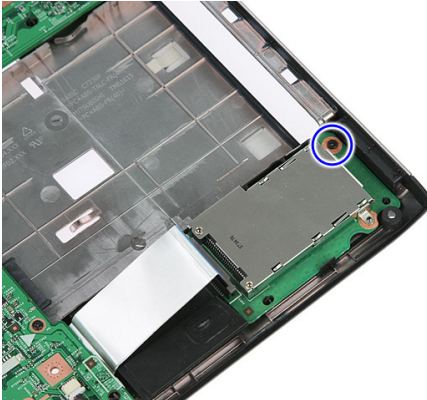
1. Follow the procedures in *Before Working On Your Computer*
2. Remove the *battery*.
3. Remove the *ExpressCard*.
4. Remove the *access panel*.
5. Remove the *keyboard*.
6. Remove the *palm rest*.
7. Lift up the ExpressCard board cable securing clip to open it.



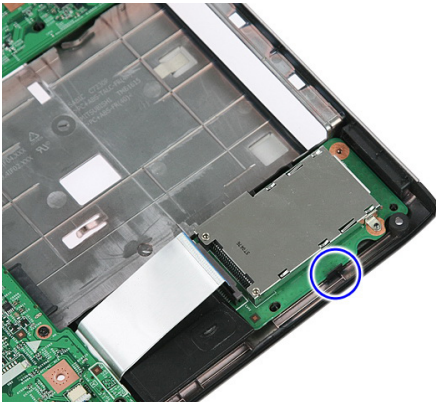
8. Disconnect the ExpressCard board cable.



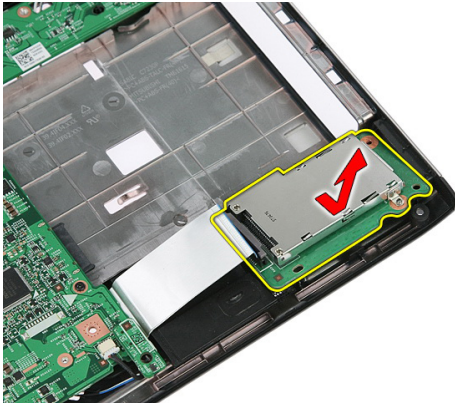
9. Remove the screw that secures the ExpressCard board.



10. Pry the latch that secures the ExpressCard board.



11. Lift up the ExpressCard board at an angle and remove.



Installing The ExpressCard Board

1. Install the ExpressCard board on the slot.
2. Secure the latch to the ExpressCard board.
3. Tighten the ExpressCard board to the system board.
4. Connect the ExpressCard board cable to the system board.
5. Press the securing clip to secure the ExpressCard board.
6. Install the *palm rest*.
7. Install the *keyboard*.
8. Install the *access panel*.
9. Install the *express card*.
10. Install the *battery*.
11. Follow the procedures in *After Working Inside Your Computer*.

Wireless Wide Area Network (WWAN) Card

11

Removing The Wireless Wide Area Network (WWAN) Card

1. Follow the procedures in *Before Working On Your Computer*
2. Remove the *battery*.
3. Remove the *access panel*.
4. Disconnect the antenna cables from the WWAN card.



5. Remove the screw that secures the WWAN card.



6. Remove the WWAN card from the computer.



Installing The Wireless Wide Area Network (WWAN) Card

1. Slide the WWAN card into its slot.
2. Tighten the screw to secure the WWAN card in place.
3. Connect the antennae according to the color code on the WWAN card.
4. Install the *access panel*.
5. Install the *battery*.
6. Follow the procedures in *After Working Inside Your Computer*.

Keyboard

12

Removing The Keyboard

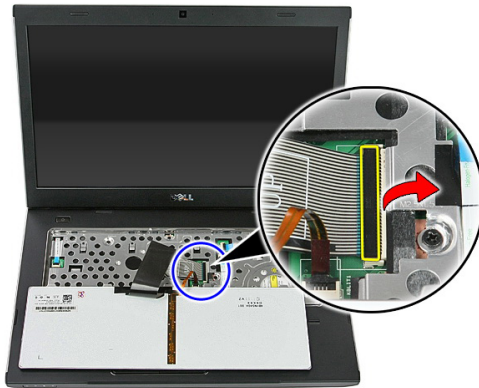
1. Follow the procedures in *Before Working On Your Computer*.
2. Remove the *battery*.
3. Release the latches that secure the keyboard to the computer.



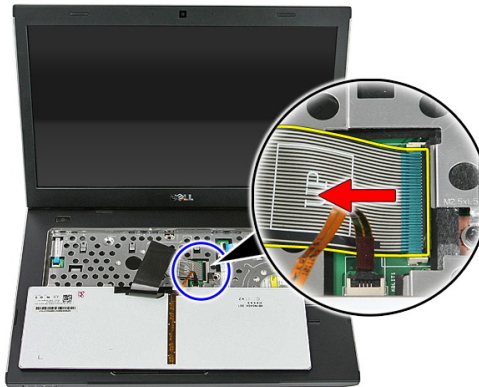
4. Slide the keyboard up and turn it over.



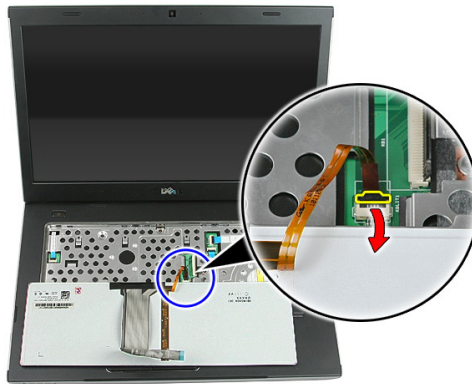
5. Release the keyboard cable securing clip.



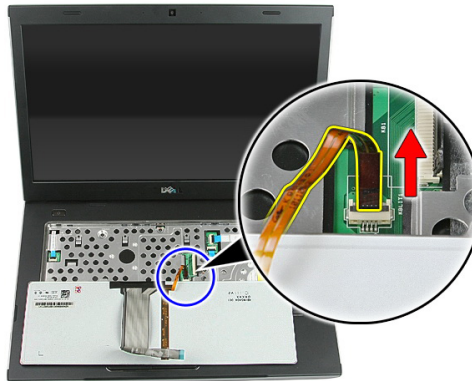
6. Disconnect the keyboard cable.



7. If your computer comes with a backlit keyboard, open the keyboard backlight cable securing clip.



8. If your computer comes with a backlit keyboard, disconnect the keyboard backlight cable.



Installing The Keyboard

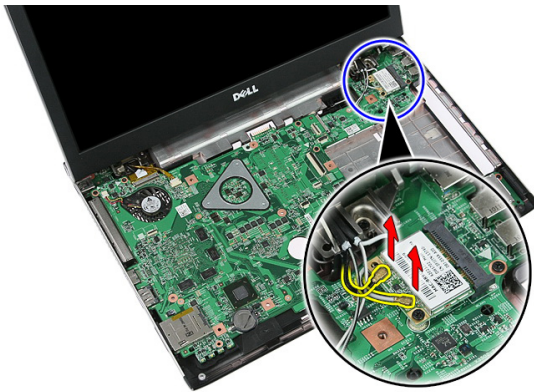
1. Connect the keyboard data cable to the back of the keyboard.
2. Replace the adhesive tape to secure the keyboard data cable on the back of the keyboard.
3. Connect the keyboard data cable to the system board.
4. If your computer comes with a backlit keyboard, connect the keyboard backlight cable.
5. Install the *battery*.
6. Follow the procedures in *After Working Inside Your Computer*.

Wireless Local Area Network (WLAN) Card

13

Removing The Wireless Local Area Network (WLAN) Card

1. Follow the procedures in *Before Working On Your Computer*
2. Remove the *battery*.
3. Remove the *access panel*.
4. Remove the *keyboard*.
5. Remove the *palm rest*.
6. Disconnect the antenna cables that may be connected to the WLAN card.



7. Remove the screw that secures the WLAN card.



8. Remove the WLAN card from the computer.



Installing The Wireless Local Area Network (WLAN) Card

1. Slide the WLAN card into its slot.
2. Tighten the screws to secure the WLAN card in place.
3. Connect the antennae according to the color code on the WLAN card.
4. Install the *palm rest*.
5. Install the *keyboard*.
6. Install the *access panel*.
7. Install the *battery*.
8. Follow the procedures in *After Working Inside Your Computer*.

Palm Rest

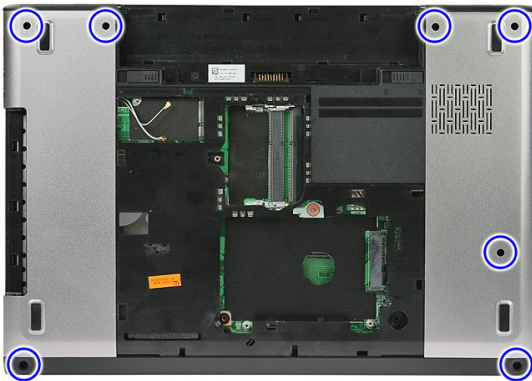
14

Removing The Palm Rest

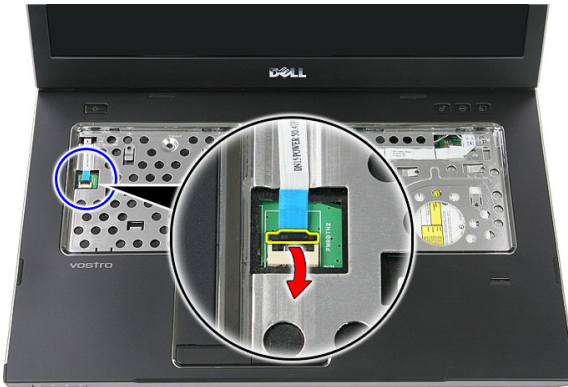
1. Follow the procedures in *Before Working On Your Computer*
2. Remove the *battery*.
3. Remove the *access panel*.
4. Remove the *keyboard*.
5. Remove the rubber pads from the bottom of the computer.



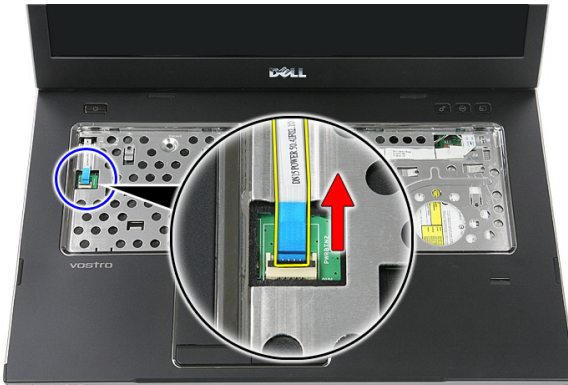
6. Remove the screws that secure the palm rest to the computer.



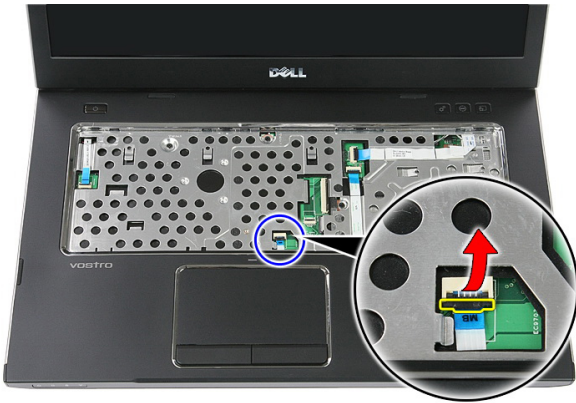
7. Release the power-button board cable securing clip.



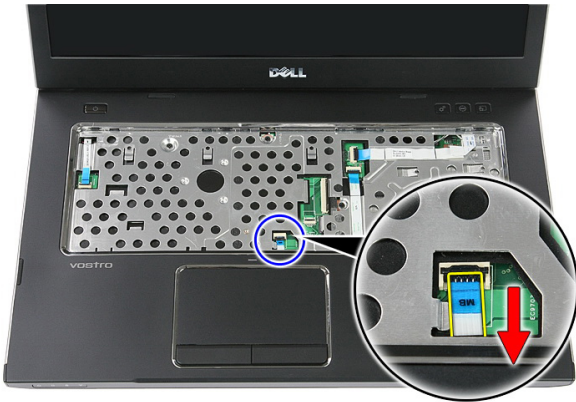
8. Disconnect the power-button board cable.



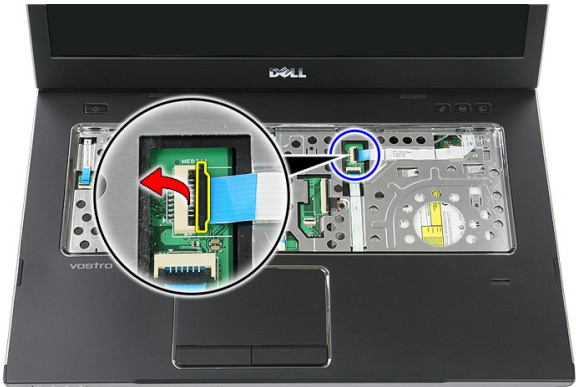
9. Release the touch-pad data cable securing clip.



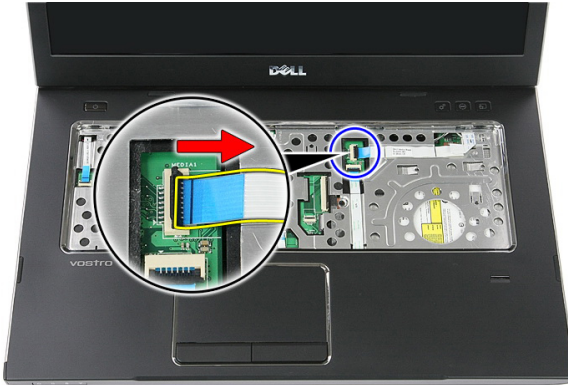
10. Disconnect the touch-pad data cable.



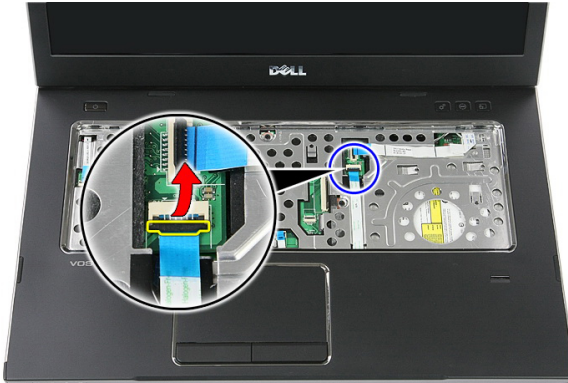
11. Release the quick-launch button board cable securing clip.



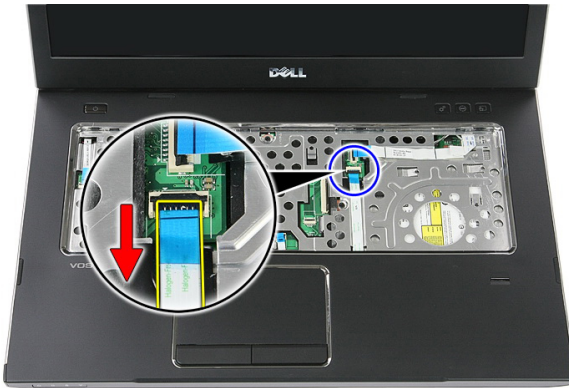
12. Disconnect the quick-launch button board cable.



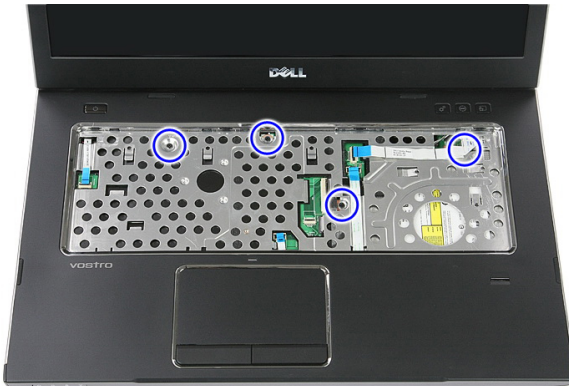
13. Release the fingerprint-reader data cable securing clip.



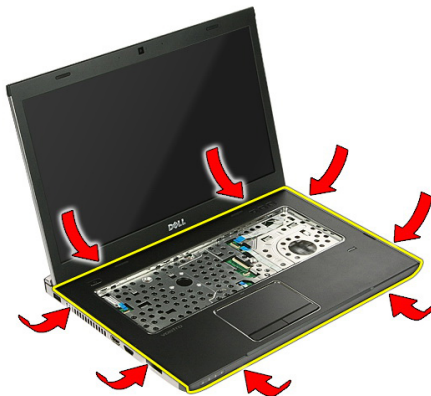
14. Disconnect the fingerprint-reader data cable.



15. Remove the screws that secure the palm rest to the system.



16. Pry along the edges of the palm rest.



17. Lift up the palm rest from the computer and remove.



Installing The Palm Rest

1. Install the palm rest on the computer.
2. Press down on the edges to secure the palm rest.
3. Tighten the captive screws to secure the palm rest.
4. Connect the touch pad, fingerprint reader and the quick-launch button board cables to the palm rest.
5. Tighten the screws on the bottom of the system securing the palm rest in place.
6. Install the rubber pads to the bottom of the computer
7. Install the *keyboard*.
8. Install the *access panel*.
9. Install the *battery*.
10. Follow the procedures in *After Working Inside Your Computer*.

Fingerprint Reader

15

Removing The Fingerprint Reader

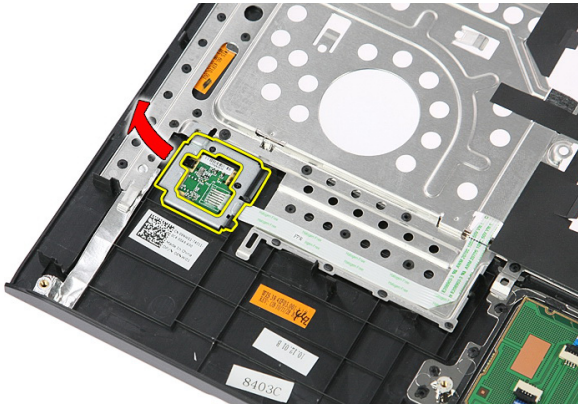
1. Follow the procedures in *Before Working On Your Computer*
2. Remove the *battery*.
3. Remove the *access panel*.
4. Remove the *keyboard*.
5. Remove the *palm rest*.
6. Release the fingerprint-reader cable from the adhesive affixed to the palm rest.



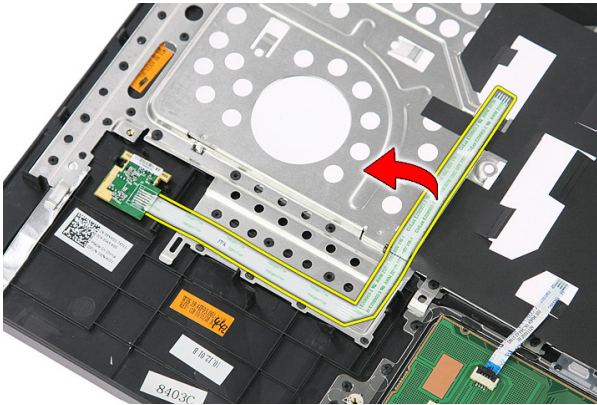
7. Remove the screw that secures the fingerprint-reader bracket.



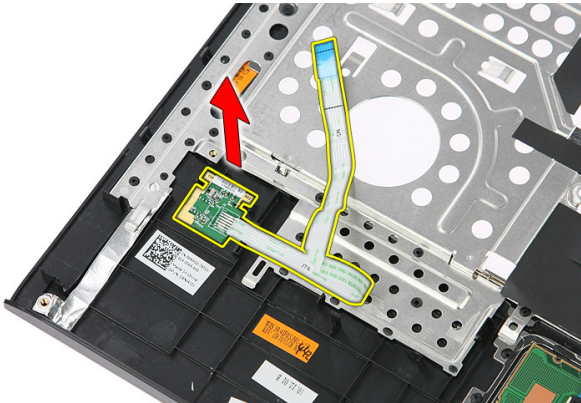
8. Lift up the fingerprint-reader bracket at an angle and remove.



9. Release the fingerprint-reader cable from the adhesive affixed to the palm rest.



10. Lift up the fingerprint-reader board and remove.



Installing The Fingerprint Reader

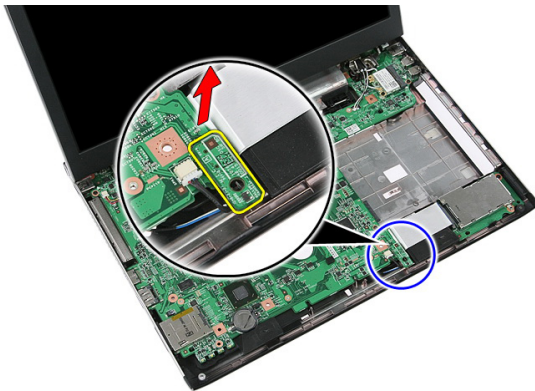
1. Affix the fingerprint-reader cable to the palm rest.
2. Tighten the screw securing the fingerprint-reader bracket.
3. Install the *palm rest*.
4. Install the *keyboard*.
5. Install the *access panel*.
6. Install the *battery*.
7. Follow the procedures in *After Working Inside Your Computer*.

Hold Switch

16

Removing The Hold Switch

1. Follow the procedures in *Before Working On Your Computer*.
2. Remove the *battery*.
3. Remove the *access panel*.
4. Remove the *keyboard*.
5. Remove the *palm rest*.
6. Lift up and remove the hold switch.

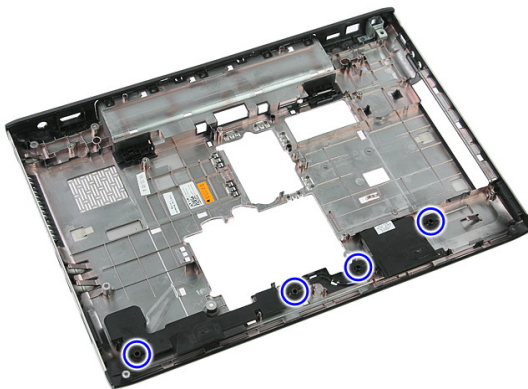


Installing The Hold Switch

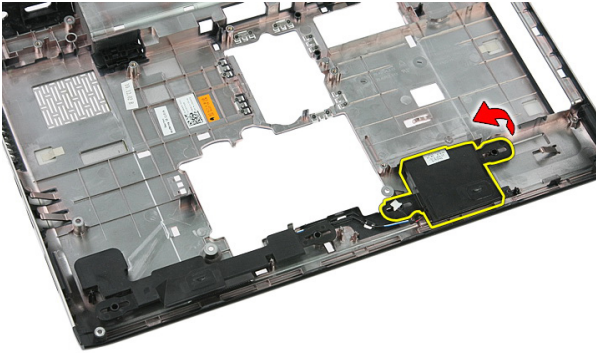
1. Install the hold switch.
2. Install the *palm rest*.
3. Install the *keyboard*.
4. Install the *access panel*.
5. Install the *battery*.
6. Follow the procedures in *After Working Inside Your Computer*.

Removing The Speakers

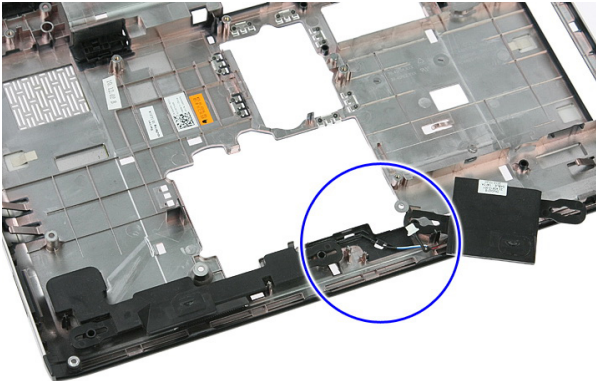
1. Follow the procedures in *Before Working On Your Computer*
2. Remove the *battery*.
3. Remove the *memory card*.
4. Remove the *ExpressCard*.
5. Remove the *access panel*.
6. Remove the *memory module*.
7. Remove the *optical drive*.
8. Remove the *hard drive*.
9. Remove the *WWAN card*.
10. Remove the *keyboard*.
11. Remove the *palm rest*.
12. Remove the *WLAN card*.
13. Remove the *hold switch*.
14. Remove the *ExpressCard board*.
15. Remove the *display assembly*.
16. Remove the *system board*.
17. Release the speakers from the four posts.



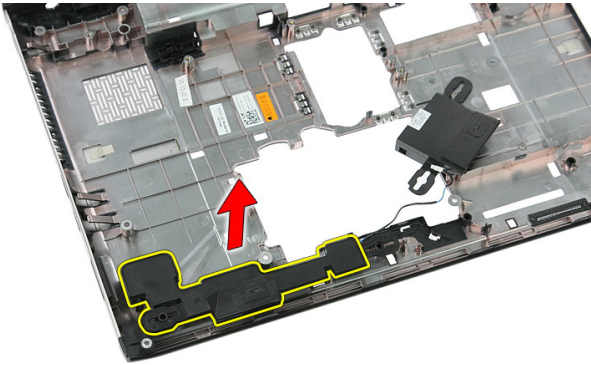
18. Lift up the right speaker.



19. Release the speaker cables from the routing channel.



20. Lift up the left speaker and remove.



Installing The Speakers

1. Install the left speaker.
2. Secure the speaker cables through the routing channel.
3. Install the right speaker.
4. Replace the screws to secure the right and left speakers.
5. Install the *system board*.
6. Install the *display assembly*.
7. Install the *ExpressCard board*.
8. Install the *hold switch*.
9. Install the *WLAN card*.
10. Install the *palm rest*.
11. Install the *keyboard*.
12. Install the *WWAN card*.
13. Install the *hard drive*.
14. Install the *optical drive*.
15. Install the *memory module*.
16. Install the *access panel*.
17. Install the *ExpressCard*.
18. Install the *memory card*.
19. Install the *battery*.
20. Follow the procedures in *After Working Inside Your Computer*.

Power-Button Board

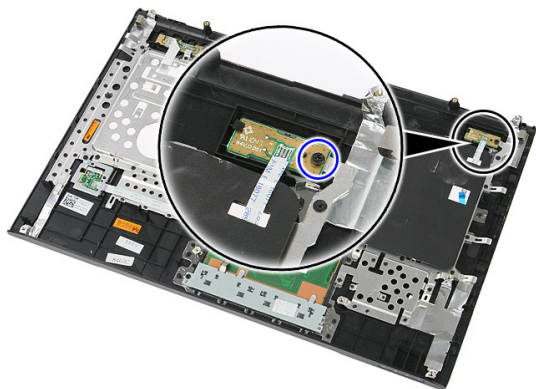
18

Removing The Power-Button Board

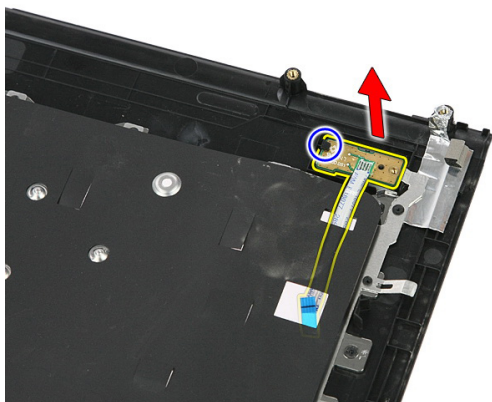
1. Follow the procedures in *Before Working On Your Computer*.
2. Remove the *battery*.
3. Remove the *access panel*.
4. Remove the *keyboard*.
5. Remove the *palm rest*.
6. Release the power-button board cable from the adhesive affixed to the palm rest.



7. Remove the screw securing the power-button board.



8. Pry the latch to release the power-button board; then lift up and remove.



Installing The Power-Button Board

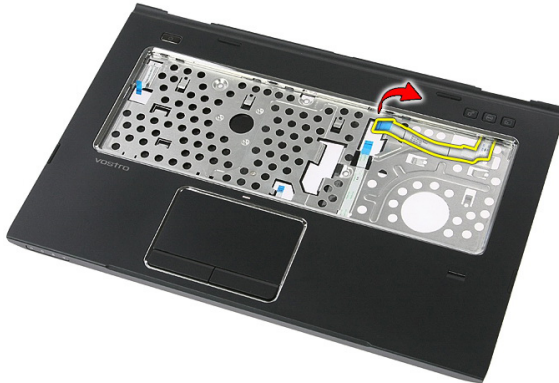
1. Install the power-button board.
2. Secure the latch of the power-button board.
3. Replace the screw to secure the power-button board.
4. Install the *palm rest*.
5. Install the *keyboard*.
6. Install the *access panel*.
7. Install the *battery*.
8. Follow the procedures in *After Working Inside Your Computer*.

Quick Launch Button Board

19

Removing The Quick-Launch Button Board

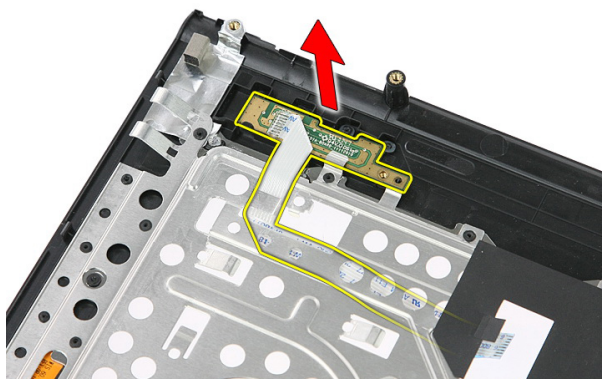
1. Follow the procedures in *Before Working On Your Computer*.
2. Remove the *battery*.
3. Remove the *access panel*.
4. Remove the *keyboard*.
5. Remove the *palm rest*.
6. Release the quick-launch button board cable from the adhesive affixed to the palm rest.



7. Remove the screw that secures the quick-launch button board.



8. Lift up the quick-launch button board and remove.



Installing The Quick Launch Button Board

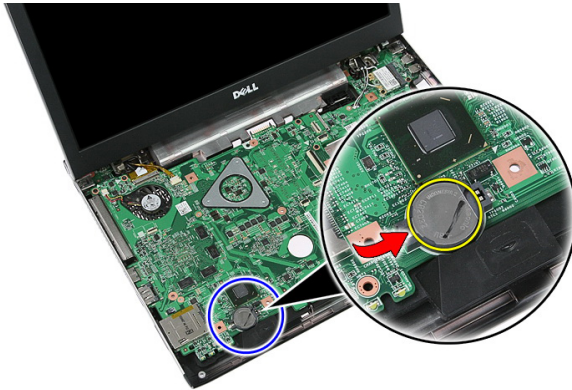
1. Install the quick launch button board.
2. Replace the screw that secures the quick launch button board.
3. Install the *palm rest*.
4. Install the *keyboard*.
5. Install the *access panel*.
6. Install the *battery*.
7. Follow the procedures in *After Working Inside Your Computer*.

Coin-Cell Battery

20

Removing The Coin-Cell Battery

1. Follow the procedures in *Before Working On Your Computer*
2. Remove the *battery*.
3. Remove the *access panel*.
4. Remove the *keyboard*.
5. Remove the *palm rest*.
6. Press on the coin-cell battery to release it from the system board.

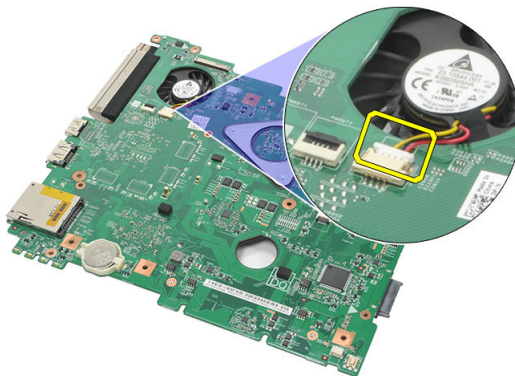


Installing The Coin-Cell Battery

1. Insert the coin-cell battery into the slot.
2. Press on the coin-cell battery until it secures into place.
3. Install the *palm rest*.
4. Install the *keyboard*.
5. Install the *access panel*.
6. Install the *battery*.
7. Follow the procedures in *After Working Inside Your Computer*.

Removing The Heatsink

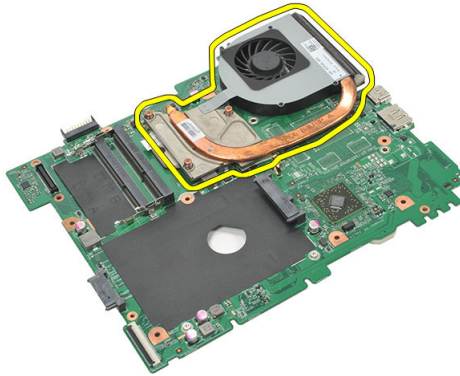
1. Follow the procedures in *Before Working On Your Computer*
2. Remove the *battery*.
3. Remove the *memory card*.
4. Remove the *ExpressCard*.
5. Remove the *access panel*.
6. Remove the *memory module*.
7. Remove the *optical drive*.
8. Remove the *hard drive*.
9. Remove the *keyboard*.
10. Remove the *palm rest*.
11. Remove the *WLAN card*.
12. Remove the *hold switch*.
13. Remove the *ExpressCard board*.
14. Remove the *display assembly*.
15. Remove the *system board*.
16. Disconnect the heatsink cable.



17. Loosen the screws that secure the heatsink to the system board.



18. Lift up the heatsink and remove from the computer.

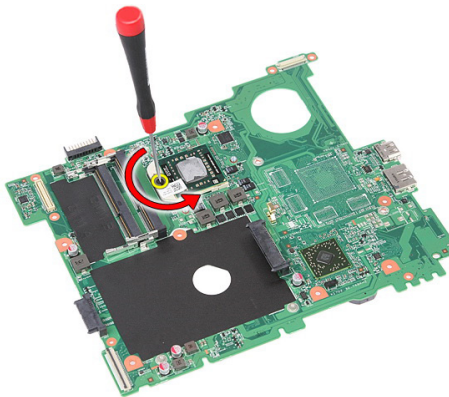


Installing The Heatsink

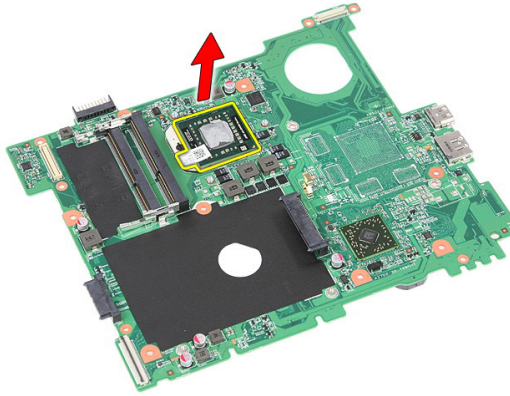
1. Place the heat sink in the slot on the system board.
2. Tighten the screws to secure the heat sink to the system board.
3. Install the *system board*.
4. Install the *display assembly*.
5. Install the *ExpressCard board*.
6. Install the *hold switch*.
7. Install the *WLAN card*.
8. Install the *palm rest*.
9. Install the *keyboard*.
10. Install the *hard drive*.
11. Install the *optical drive*.
12. Install the *memory module*.
13. Install the *access panel*.
14. Install the *ExpressCard*.
15. Install the *memory card*.
16. Install the *battery*.
17. Follow the procedures in *After Working Inside Your Computer*.

Removing The Processor

1. Follow the procedures in *Before Working On Your Computer*
2. Remove the *battery*.
3. Remove the *memory card*.
4. Remove the *ExpressCard*.
5. Remove the *access panel*.
6. Remove the *memory module*.
7. Remove the *optical drive*.
8. Remove the *hard drive*.
9. Remove the *keyboard*.
10. Remove the *palm rest*.
11. Remove the *WLAN card*.
12. Remove the *hold switch*.
13. Remove the *ExpressCard board*.
14. Remove the *display assembly*.
15. Remove the *system board*.
16. Rotate the processor cam lock in a counter-clockwise direction.



17. Lift up the processor and remove.



Installing The Processor

1. Insert the processor into the processor socket. Ensure the processor is properly seated.
2. Tighten the cam lock in a clockwise direction.
3. Install the *system board*.
4. Install the *display assembly*.
5. Install the *ExpressCard board*.
6. Install the *hold switch*.
7. Install the *WLAN card*.
8. Install the *palm rest*.
9. Install the *keyboard*.
10. Install the *hard drive*.
11. Install the *optical drive*.
12. Install the *memory module*.
13. Install the *access panel*.
14. Install the *ExpressCard*.
15. Install the *memory card*.
16. Install the *battery*.
17. Follow the procedures in *After Working Inside Your Computer*.

Display Assembly

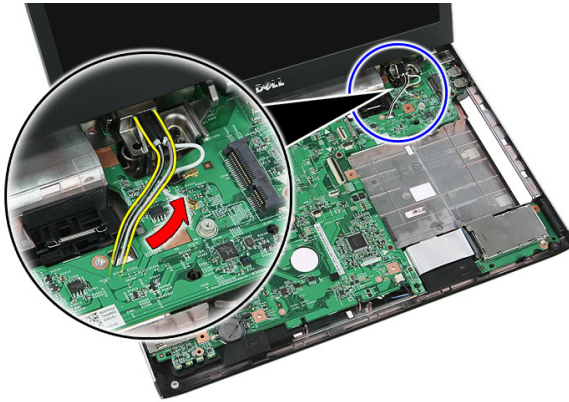
23

Removing The Display Assembly

1. Follow the procedures in *Before Working On Your Computer*
2. Remove the *battery*.
3. Remove the *access panel*.
4. Remove the *WWAN card*.
5. Remove the *keyboard*.
6. Remove the *palm rest*.
7. Remove the *WLAN card*.
8. Pry off the middle cover.



9. Pull out any WWAN antenna cables from the routing hole.



10. Disconnect the display-data cable from the system board.



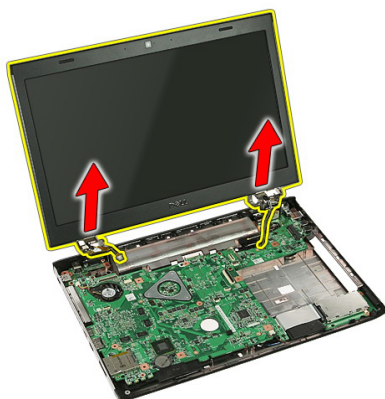
11. If your computer comes with a touch panel, disconnect the touch-panel cable.



12. Remove the screws that secure the display assembly to the system.



13. Lift the display assembly up from the system and remove.



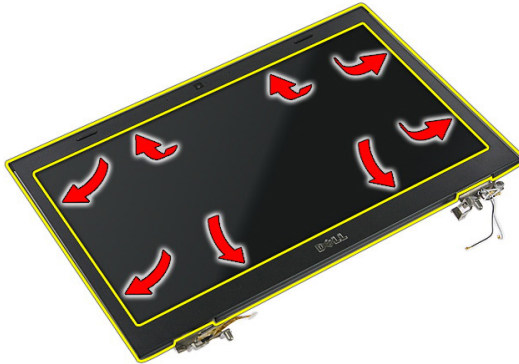
Installing The Display Assembly

1. Attach the display assembly to the base of the computer.
2. Tighten the screws to secure the display assembly.
3. Connect the touch panel cable (if any) to the system board.
4. Connect the display data cable to the system board.
5. Secure the antenna cables to the routing channels.
6. Connect the antenna cables to the installed wireless solutions.
7. Connect the middle cover.
8. Install the *WLAN card*.
9. Install the *palm rest*.
10. Install the *keyboard*.
11. Install the *WWAN card*.
12. Install the *access panel*.
13. Install the *battery*.
14. Follow the procedures in *After Working Inside Your Computer*.

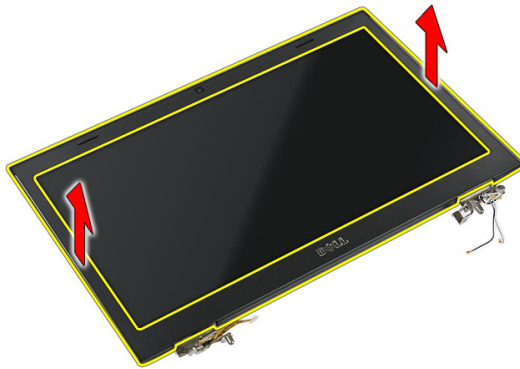
Display Bezel

Removing The Display Bezel

1. Follow the procedures in *Before Working On Your Computer*
2. Remove the *battery*.
3. Remove the *access panel*.
4. Remove the *WWAN card*.
5. Remove the *keyboard*.
6. Remove the *palm rest*.
7. Remove the *WLAN card*.
8. Remove the *display assembly*.
9. Pry the bezel off the display assembly.



10. Lift up the display bezel and remove.

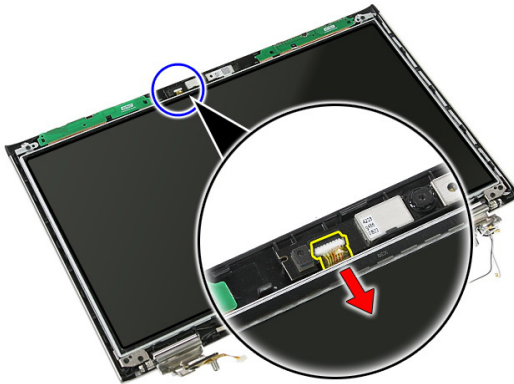


Installing The Display Bezel

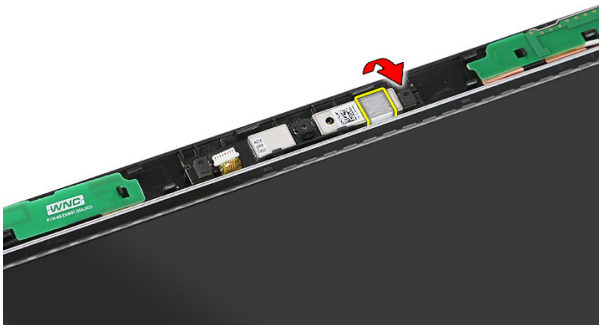
1. Place the display bezel on the computer.
2. Starting from the bottom edge, press downward on the display bezel to engage the tabs.
3. Install the *display assembly*.
4. Install the *WLAN card*.
5. Install the *palm rest*.
6. Install the *keyboard*.
7. Install the *WWAN card*.
8. Install the *access panel*.
9. Install the *battery*.
10. Follow the procedures in *After Working Inside Your Computer*.

Removing The Camera

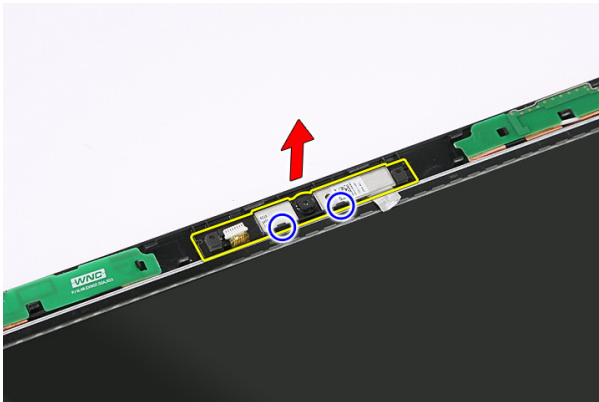
1. Follow the procedures in *Before Working On Your Computer*.
2. Remove the *battery*.
3. Remove the *access panel*.
4. Remove the *WWAN card*.
5. Remove the *keyboard*.
6. Remove the *palm rest*.
7. Remove the *WLAN card*.
8. Remove the *display assembly*.
9. Remove the *display bezel*.
10. Disconnect the camera cable.



11. Peel off the tape that secures the camera.



12. Pry the latch, then lift up the display and remove.



Installing The Camera

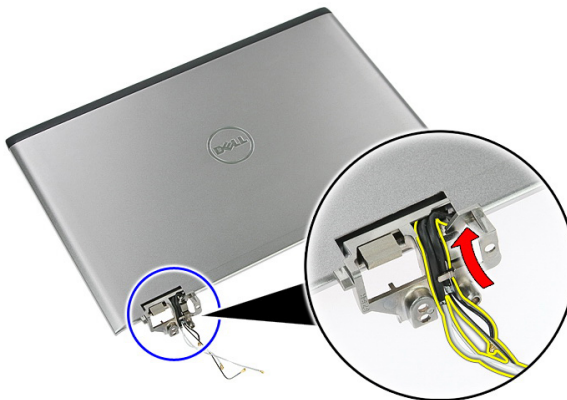
1. Place the camera on the display panel slot.
2. Affix the tape to secure the camera.
3. Install the *display bezel*.
4. Install the *display assembly*.
5. Install the *WLAN card*.
6. Install the *palm rest*.
7. Install the *keyboard*.
8. Install the *WWAN card*.
9. Install the *access panel*.
10. Install the *battery*.
11. Follow the procedures in *After Working Inside Your Computer*.

Display Brackets and Hinges

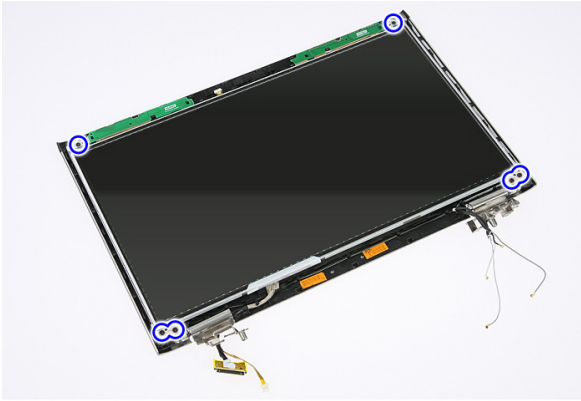
26

Removing The Display Brackets, Hinges And Panel

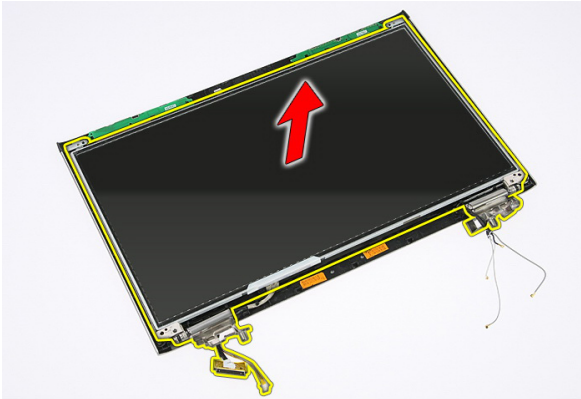
1. Follow the procedures in *Before Working On Your Computer*.
2. Remove the *battery*.
3. Remove the *memory card*.
4. Remove the *access panel*.
5. Remove the *WLAN card*.
6. Remove the *hard drive*.
7. Remove the *keyboard*.
8. Remove the *WWAN card*.
9. Remove the *palm rest*.
10. Remove the *display assembly*.
11. Remove the *display bezel*.
12. Remove the *display camera*.
13. Release the antenna cables from the right hinge.



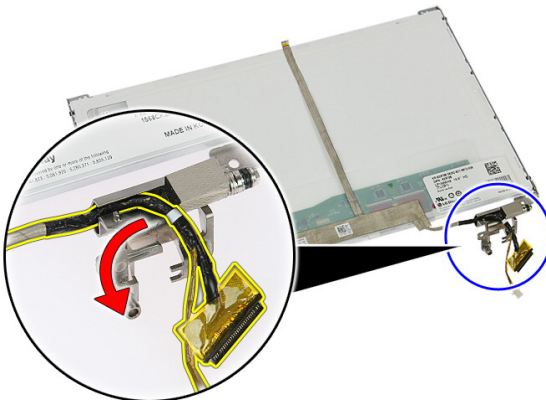
14. Remove the screws that secure the display brackets and hinges to the display assembly.



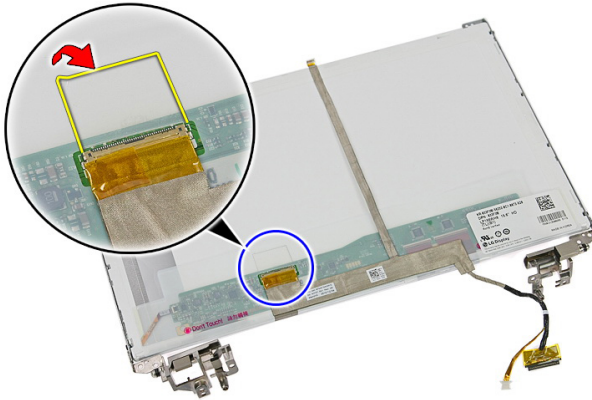
15. Lift up and remove the display panel with brackets and hinges.



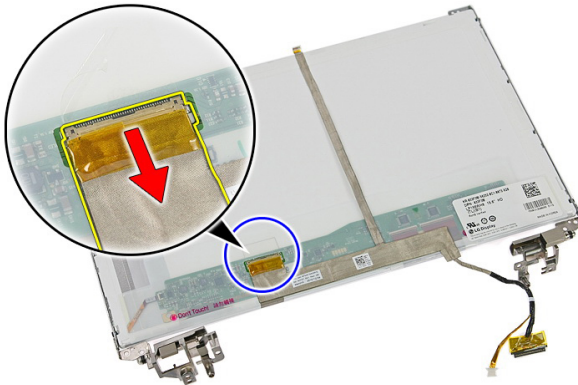
16. Release the cables from the left hinge.



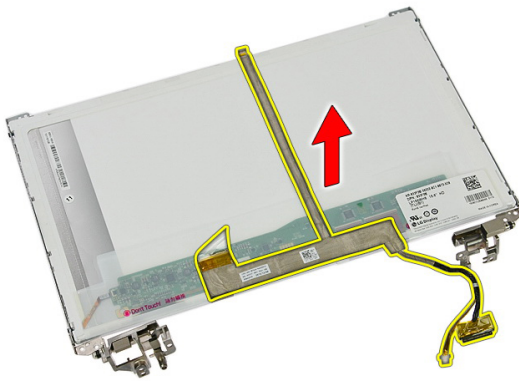
17. Peel open the tape that secures the display cable to the display panel.



18. Disconnect the display cable from the display panel.



19. Peel off and remove the display cable.



20. Remove the screws that secure the display brackets and hinges to the display panel.



Installing The Display Brackets, Hinges and Panel

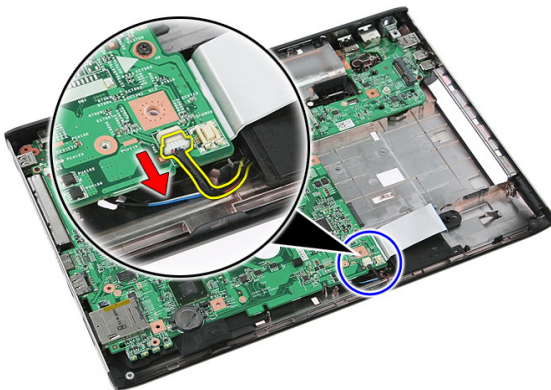
1. Tighten the screws to secure the display brackets and hinges to the display panel.
2. Affix the display cable to the back of the display panel
3. Secure the cables through the left hinge.
4. Tighten the screws to secure the display brackets and hinges to the display assembly.
5. Secure the antenna cable to the right hinge.
6. Install the *display camera*.
7. Install the *display bezel*.
8. Install the *display assembly*.
9. Install the *palm rest*.
10. Install the *WWAN card*.
11. Install the *keyboard*.
12. Install the *hard drive*.
13. Install the *WLAN card*.
14. Install the *access panel*.
15. Install the *memory card*.
16. Install the *battery*.
17. Follow the procedures in *After Working Inside Your Computer*.

System Board

27

Removing The System Board

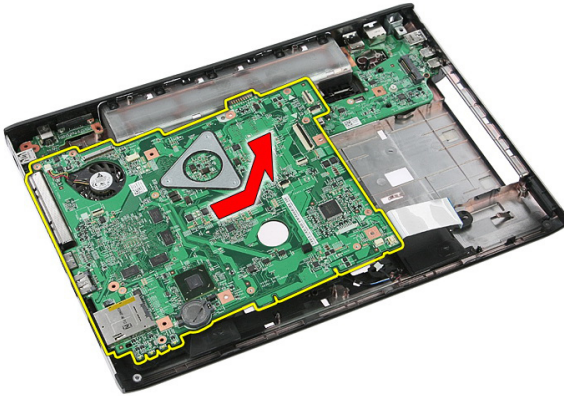
1. Follow the procedures in *Before Working On Your Computer*
2. Remove the *battery*.
3. Remove the *memory card*.
4. Remove the *ExpressCard*.
5. Remove the *access panel*.
6. Remove the *memory module*.
7. Remove the *optical drive*.
8. Remove the *hard drive*.
9. Remove the *keyboard*.
10. Remove the *palm rest*.
11. Remove the *WLAN card*.
12. Remove the *hold switch*.
13. Remove the *ExpressCard board*.
14. Remove the *display assembly*.
15. Disconnect the speaker cable.



16. Remove the screws that secure the system board to the chassis.



17. Lift up the system board at an angle and remove.



Installing The System Board

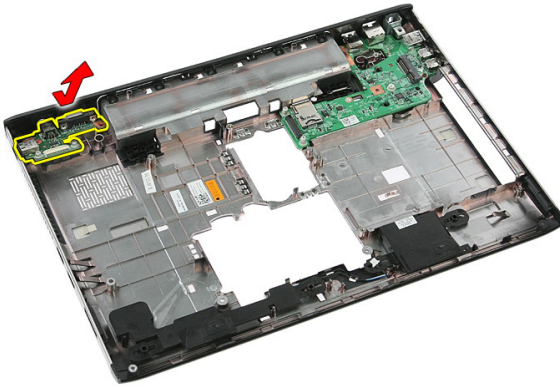
1. Align the system board to the port connectors on the rear of the chassis and place the system board in the computer.
2. Tighten the screws to secure the system board in place.
3. Install the speaker cable.
4. Install the *display assembly*.
5. Install the *ExpressCard board*.
6. Install the *hold switch*.
7. Install the *WLAN card*.
8. Install the *palm rest*.
9. Install the *keyboard*.
10. Install the *hard drive*.
11. Install the *optical drive*.
12. Install the *memory module*.
13. Install the *access panel*.
14. Install the *battery*.
15. Follow the procedures in *After Working Inside Your Computer*.

Left Input/Output Board

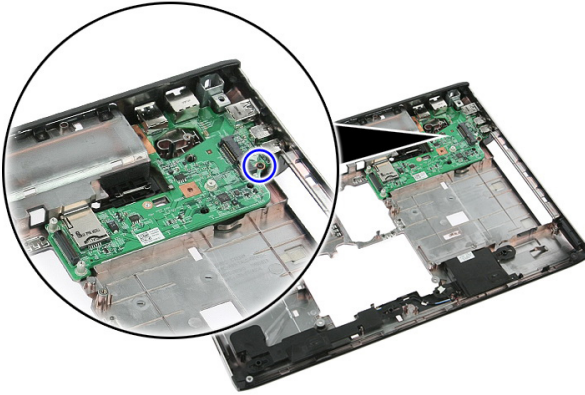
28

Removing The Left And The Right Input/Output (I/O) Board

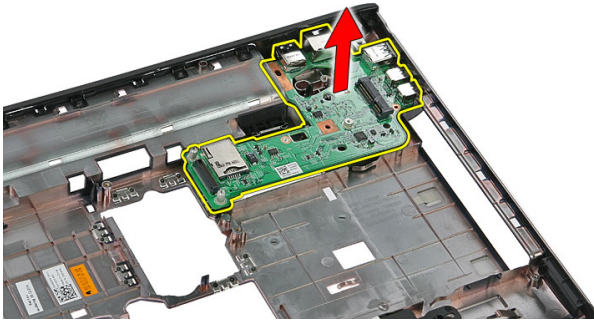
1. Follow the procedures in *Before Working On Your Computer*.
2. Remove the *battery*.
3. Remove the *memory card*.
4. Remove the *ExpressCard*.
5. Remove the *access panel*.
6. Remove the *memory module*.
7. Remove the *optical drive*.
8. Remove the *hard drive*.
9. Remove the *WWAN card*.
10. Remove the *keyboard*.
11. Remove the *palm rest*.
12. Remove the *WLAN card*.
13. Remove the *hold switch*.
14. Remove the *ExpressCard board*.
15. Remove the *display assembly*.
16. Remove the *system board*.
17. Lift up the left I/O board at an angle and remove.



18. Remove the screw that secures the right I/O board.



19. Lift up the I/O board and remove.



Installing The Left And The Right Input/Output (I/O) Board

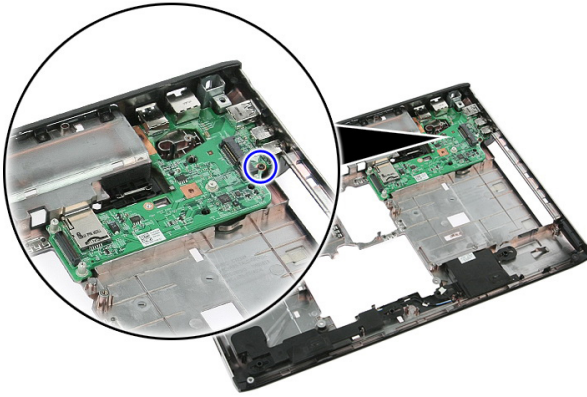
1. Install the left and the right I/O board.
2. Install the *system board*.
3. Install the *display assembly*.
4. Install the *ExpressCard board*.
5. Install the *hold switch*.
6. Install the *WLAN card*.
7. Install the *palm rest*.
8. Install the *keyboard*.
9. Install the *WWAN card*.
10. Install the *hard drive*.
11. Install the *optical drive*.
12. Install the *memory module*.
13. Install the *access panel*.
14. Install the *ExpressCard*.
15. Install the *memory card*.
16. Install the *battery*.
17. Follow the procedures in *After Working Inside Your Computer*.

Right Input/Output Board

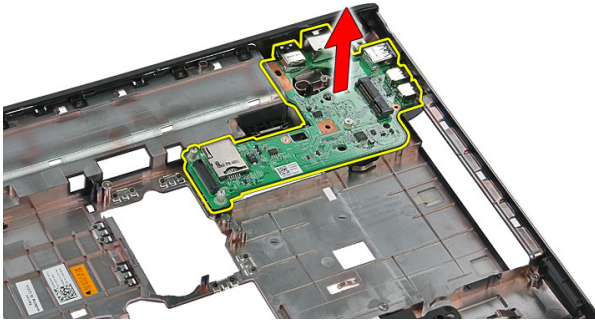
29

Removing The Right Input/Output (I/O) Board

1. Follow the procedures in *Before Working On Your Computer*.
2. Remove the *battery*.
3. Remove the *memory card*.
4. Remove the *ExpressCard*.
5. Remove the *access panel*.
6. Remove the *memory module*.
7. Remove the *optical drive*.
8. Remove the *hard drive*.
9. Remove the *WWAN card*.
10. Remove the *keyboard*.
11. Remove the *palm rest*.
12. Remove the *WLAN card*.
13. Remove the *hold switch*.
14. Remove the *ExpressCard board*.
15. Remove the *display assembly*.
16. Remove the *system board*.
17. Remove the screw that secures the I/O board.



18. Lift up the I/O board and remove.



Installing The Right Input/Output (I/O) Board

1. Install the right input/output board.
2. Tighten the screw to secure the right input/output board.
3. Install the *system board*.
4. Install the *display assembly*.
5. Install the *ExpressCard board*.
6. Install the *hold switch*.
7. Install the *WLAN card*.
8. Install the *palm rest*.
9. Install the *keyboard*.
10. Install the *WWAN card*.
11. Install the *hard drive*.
12. Install the *optical drive*.
13. Install the *memory module*.
14. Install the *access panel*.
15. Install the *ExpressCard*.
16. Install the *memory card*.
17. Install the *battery*.
18. Follow the procedures in *After Working Inside Your Computer*.

System Setup Overview

System Setup allows you to:


- change the system configuration information after you add, change, or remove any hardware in your computer.
- set or change a user-selectable option such as the user password.
- read the current amount of memory or set the type of hard drive installed.

Before you use System Setup, it is recommended that you write down the System Setup screen information for future reference.

 **CAUTION:** Unless you are an expert computer user, do not change the settings for this program. Certain changes can cause your computer to work incorrectly.

System Setup Enter

1. Turn on (or restart) your computer.
2. When the blue DELL logo is displayed, you must watch for the F2 prompt to appear.
3. Once the F2 prompt appears, press <F2> immediately.

 **NOTE:** The F2 prompt indicates that the keyboard has initialized. This prompt can appear very quickly, so you must watch for it to display, and then press <F2> . If you press <F2> before you are prompted, this keystroke will be lost.

4. If you wait too long and the operating system logo appears, continue to wait until you see the Microsoft Windows desktop. Then, shut down your computer and try again.

System Setup Screens

Menu — Appears on top of the System Setup window. This field provides a menu to access the System Setup options. Press < Left Arrow > and < Right Arrow > keys to navigate. As a **Menu** option is highlighted, the **Options List** lists the options that define the hardware installed on your computer.

Options List — Appears on the left side of the System Setup window. The field lists features that define the configuration of your computer, including installed hardware, power conservation, and security features. Scroll up and down the list with the up- and down-arrow keys. As an option is highlighted, the **Options Field** displays the option's current and available settings.

Options Field — Appears on the right side of **Options List** and contains information about each option listed in the **Options List**. In this field you can view information about your computer and make changes to your current settings. Press <Enter> to make changes to your current settings. Press <ESC> to return to the **Options List**.

Help — Appears on the right side of the System Setup window and contains help information about the option selected in **Options List**.



NOTE: Not all settings listed in the Options Field are changeable.

Key Functions — Appears below the **Options Field** and lists keys and their functions within the active system setup field.

Use the following keys to navigate through the System Setup screens:

Keystroke	Action
< F2 >	Displays information on any selected item in the System Setup.
< Esc >	Exit from current view or switch the current view to the Exit page in the System Setup.
< Up Arrow > or < Down Arrow >	Select an item to display.
< Left Arrow > or < Right Arrow >	Select a menu to display.
– or +	Change existing item value.
< Enter >	Select the sub menu or execute command.
< F9 >	Load setup default.
< F10 >	Save current configuration and exit System Setup.

System Setup Options

Main

System Information

System Date	Displays the computer model number.
System Time	Re-sets the date on the computer's internal calendar.
BIOS Version	Re-sets the time on the computer's internal clock.
Product Name	Displays the BIOS revision.
Service Tag	Displays the product name and the model number.
Asset Tag	Displays the service tag of your computer.

Processor Information

CPU Type	Displays the asset tag of your computer (if available).
CPU Speed	Displays the type of processor.
CPU ID	Displays the speed of the processor.
L1 Cache Size	Displays the processor ID.
L2 Cache Size	Displays the processor L1 cache size.
L3 Cache Size	Displays the processor L2 cache size.

Memory Information

Extended Memory	Displays the memory installed on the computer.
System Memory	Displays the memory in-built on the computer.
Memory Speed	Displays the memory speed.

Device Information

Fixed HDD	Displays the model number and capacity of the hard drive.
SATA ODD	Displays the model number and capacity of the optical drive.

eSATA Device	Displays information about the installed eSATA device.
AC Adapter Type	Displays the type of the AC adapter.

Advanced

Intel SpeedStep	Enable or disable the Intel SpeedStep feature.	Default: Enabled
Virtualization	Enable or disable the Intel Virtualization feature.	Default: Enabled
Integrated NIC	Enable or disable the power supply to the on-board network card.	Default: Enabled
USB Emulation	Enable or disable the USB emulation feature	Default: Enabled
USB Powershare	Allows the computer to charge external devices using the stored system battery power through the USB PowerShare port, even while the computer is turned off.	Default: Enabled
USB Wake Support	Allows USB devices to wake-up the computer from standby. This feature is enabled only when the AC adapter is connected.	Default: Disabled
SATA Operation	Change the SATA controller mode to either ATA or AHCI.	Default: AHCI
Adapter Warnings	Enables or disables adapter warnings.	Default: Enabled
Function Key Behavior	Specifies the behavior of the function key <Fn> .	Default: Function key first
Charger Behavior	Specifies if the computer battery will be charged when connected to an AC power source.	Default: Enabled

Miscellaneous Devices These fields let you enable or disable various on board devices.

Security

Set Service Tag This field displays your system's service tag. If the service tag is not already set, this field can be used to enter it.

Set Supervisor Password Allows you to change or delete the administrator password.

Set HDD Password Allows you to set a password on the computer's internal hard drive (HDD).

Password Bypass Allows you to bypass the system password and the internal HDD password prompts during a system restart/resume from hibernate state.

Computrace Enable or disable the Computrace feature on your computer.

Boot

Boot Priority Order Specifies the order of different devices in which the computer will boot through at start up.

Hard Disk Drives Specify which hard drive the computer can boot through.

USB Storage Device Specify which USB storage device the computer can boot through.

CD/DVD ROM Drives Specify which CD/DVD the computer can boot through.





eSATA Specify which eSATA device the computer can boot through.

Network Specify which network device the computer can boot through.

Exit

This section allows you to save, discard, and load default settings before exiting from System Setup.

Device Status Lights

-  Turns on when you turn on the computer and blinks when the computer is in a power management mode.
-  Turns on when the computer reads or writes data.
-  Turns on steadily or blinks to indicate battery charge status.
-  Turns on when wireless networking is enabled.

Battery Status Lights

If the computer is connected to an electrical outlet, the battery light operates as follows:

- **Alternately blinking amber light and white light** — An unauthenticated or unsupported non-Dell AC adapter is attached to your laptop.
- **Alternately blinking amber light with steady white light** — Temporary battery failure with AC adapter present.
- **Constantly blinking amber light** — Fatal battery failure with AC adapter present.
- **Light off** — Battery in full charge mode with AC adapter present.
- **White light on** — Battery in charge mode with AC adapter present.


Diagnostic Beep Codes

The following table shows the possible beep codes that may be emitted by the computer when your computer is unable to complete a power on self test.

Beep	Possible Cause	Troubleshooting Steps
1	BIOS ROM checksum in progress of failure.	System board failure, covers BIOS corruption or ROM error

Beep	Possible Cause	Troubleshooting Steps
2	No RAM detected	No memory detected
3	<ul style="list-style-type: none"> • Chipset Error (North and South Bridge Chipset, DMA/IMR/Timer Error) • Time-Of-Day Clock test failure • Gate A20 failure • Super I/O chip failure • Keyboard controller test failure 	System board Failure
4	RAM Read/Write failure	Memory failure
5	Real-time clock power fail	CMOS battery failure
6	Video BIOS Test Failure	Video card failure
7	Processor Failure	Processor Failure
8	Display	Display Failure

Specifications

 **NOTE:** Offerings may vary by region. The following specifications are only those required by law to ship with your computer. For more information regarding the configuration of your computer, click **Start** → **Help and Support** and select the option to view information about your computer.

System Information

Chipset:

Vostro 3350/ 3450/ 3550/ 3750

Intel HM67

Vostro 3555

AMD A70M

Processor:

Vostro 3350/ 3450/ 3550/ 3750

- Intel Core i3 / i5 series
- Intel Core i7 (Quad-Core for Vostro 3750 only)

Vostro 3555

- AMD Dual Core
- AMD Quad Core

Memory

Memory connector

two SODIMM slots

Memory capacity

1 GB, 2 GB, and 4 GB

Memory type


DDR3 SDRAM with 1333 MHz

Minimum memory

2 GB

Maximum memory

8 GB

 **NOTE:** Only 64-bit operating systems can detect memory capacities greater than 4 GB.

Video

Video type

- integrated on system board
- discrete video card

Video

Video controller and memory

UMA:

Vostro 3350/ 3450/ 3550/ 3750	Intel Graphics Media Accelerator HD
Vostro 3555	AMD Radeon HD series — up to 256 MB / 512 MB of shared memory

Discrete:

Vostro 3350	AMD Radeon HD6490 GDDR5 - 512 MB
Vostro 3450/ 3550	AMD Radeon HD6630 - 1 GB VRAM
Vostro 3750	NVIDIA GeForce GT 525M - 1 GB

Communications

Network adapter	10/100/1000 Mbps Ethernet LAN
Wireless	internal wireless local area network (WLAN) and wireless wide area network (WWAN)

Ports and Connectors

Audio	one microphone connector and one stereo headphones/ external speakers connector
Video	
Vostro 3350/ 3450/ 3550/ 3555/ 3750	one 19-pin HDMI connector and one 15-pin VGA connector
Network adapter	one RJ-45 connector
USB	
Vostro 3350	two USB 3.0-compliant connectors and one eSATA/USB 2.0-compliant connector
Vostro 3450	two USB 3.0-compliant connectors, one USB 2.0-compliant connector and one eSATA/USB 2.0-compliant connector
Vostro 3550	two USB 3.0-compliant connectors, one USB 2.0-compliant connector and one eSATA/USB 2.0-compliant connector

Ports and Connectors

Vostro 3555	three USB 3.0-compliant connectors and one eSATA/USB 2.0-compliant connector
Vostro 3750	two USB 3.0-compliant connectors, one USB 2.0-compliant connector and one eSATA/USB 2.0-compliant connector
Memory card reader	one 8-in-1 memory card reader
fingerprint reader	one

Keyboard

Number of keys

Vostro 3350/ 3450/ 3550/ 3555	United States: 86 keys, United Kingdom: 87 keys, Brazil: 87 keys, and Japan: 90 keys
Vostro 3750	United States: 101 keys United Kingdom: 102 keys Brazil: 104 keys Japan: 105 keys

Layout	QWERTY/AZERTY/Kanji
--------	---------------------

Touchpad

Active Area:

Vostro 3350/ 3450/ 3550/ 3555

X-axis	80.00 mm
Y-axis	40.70 mm

Vostro 3750

X-axis	95.00 mm
Y-axis	52.00 mm

Display

Vostro 3350

Type	white Light Emitting Diode (WLED) display
Size	13.3 inch high definition (HD)
Active area (X/Y)	293.42 mm x 164.97 mm
Dimensions:	

Display

Height	189.00 mm (7.44 inches)
Width	314.00 mm (12.36 inches)
Diagonal	337.82 mm (13.30 inches)
Maximum resolution	1366 x 768 pixels at 263 K colors
Maximum Brightness	200 nits
Operating angle	0° (closed) to 135°
Refresh rate	60 Hz
Minimum Viewing angles:	
Horizontal	+/- 40°
Vertical	+10°/-30°
Pixel pitch	0.2148 mm

Vostro 3450

Type	WLED display
Size	14.0 inch HD
Active area (X/Y)	309.40 mm x 173.95 mm
Dimensions:	
Height	192.50 mm (7.58 inches)
Width	324.00 mm (12.76 inches)
Diagonal	355.60 mm (14.00 inches)
Maximum resolution	1366 x 768 pixels at 263 K colors
Maximum Brightness	200 nits
Operating angle	0° (closed) to 135°
Refresh rate	60 Hz
Minimum Viewing angles:	
Horizontal	+/- 40°
Vertical	+10°/-30°
Pixel pitch	0.2265 mm

Vostro 3550/3555

Display

Type	WLED display
Size	15.6 inch HD
Active area (X/Y)	344.23 mm x 193.54 mm
Dimensions:	
Height	210.00 mm (8.26 inches)
Width	360.00 mm (14.17 inches)
Diagonal	396.24 mm (15.60 inches)
Maximum resolution	1366 x 768 pixels at 262K colors
Maximum Brightness	220 nits
Operating angle	0° (closed) to 135°
Refresh rate	60 Hz
Minimum Viewing angles:	
Horizontal	+/- 60°
Vertical	+/- 50°
Pixel pitch	0.252 mm

Vostro 3750

Type	WLED display
Size	17.3 inch HD
Active area (X/Y)	382.08 mm x 214.92 mm
Dimensions:	
Height	398.60 mm
Width	233.30 mm
Diagonal	439.42 mm
Maximum resolution	1600 x 900 pixels at 262K colors
Maximum Brightness	200 nits
Operating angle	0° (closed) to 135°
Refresh rate	60 Hz
Minimum Viewing angles:	

Display

Horizontal	+/- 40°
Vertical	+10°/- 30°
Pixel pitch	0.238 mm

Battery

Vostro 3350

Type	<ul style="list-style-type: none">• 4-cell "smart" lithium ion (2.8 AHr)• 8-cell "smart" lithium ion (2.8 AHr)
------	---

Dimensions:

Depth	4-cell — 43.45 mm (1.71 inches) 8-cell — 43.45 mm (1.71 inches)
-------	--

Height	4-cell — 19.10 mm (0.75 inch) 8-cell — 42.36 mm (1.67 inches)
--------	--

Width	4-cell — 199.10 mm (7.84 inches) 8-cell — 270.00 mm (10.63 inches)
-------	---

Weight

4-cell — 230.00 g (0.51 lb)
8-cell — 446.00 g (0.98 lb)

Voltage

14.8 VDC

Vostro 3450/3550/3555

Type	<ul style="list-style-type: none">• 6-cell "smart" lithium ion (2.2 AHr)• 9-cell "smart" lithium ion (2.8 AHr)
------	---

Dimensions:

Depth	6-cell / 9-cell — 57.80 mm (2.27 inches)
-------	--

Battery


Height	6-cell — 20.80 mm (0.81 inch) 9-cell — 40.15 mm (1.58 inches)
Width	6-cell / 9-cell — 255.60 mm (10.06 inches)
Weight	6-cell — 340.00 g (0.75 lb) 9-cell — 504.50 g (1.11 lb)
Voltage	11.1 VDC
Vostro 3750	
Type	<ul style="list-style-type: none">• 6-cell "smart" lithium ion (2.6 AHr)• 9-cell "smart" lithium ion (2.8 AHr)
Dimensions:	
Depth	6-cell — 57.80 mm (2.27 inches) 9-cell — 57.80 mm (2.27 inches)
Height	6-cell — 20.80 mm (0.82 inch) 9-cell — 40.15 mm (1.58 inches)
Width	6-cell/9-cell — 255.60 mm (10.06 inches)
Weight	6-cell — 340.00 g (0.75 lb) 9-cell — 504.50 g (1.11 lb)
Voltage	11.1 VDC
Temperature range:	
Operating	0 °C to 35 °C (32 °F to 95 °F)

Battery

Non-operating	-40 °C to ~65 °C (-40 °F to ~149 °F)
Coin-cell battery	3 V CR2032 lithium ion

AC Adapter

Input voltage	100 VAC to 240 VAC
Input current (maximum)	1.5 A / 1.6 A / 1.7 A / 2.3 A / 2.5 A
Input frequency	50 Hz to 60 Hz
Output power	65 W, 90 W, or 130 W

 **NOTE:** 130 W AC power adapter is available for Vostro 3750 only.

Output current:

65 W	<ul style="list-style-type: none">• 4.34 A (maximum at 4-second pulse)• 3.34 A (continuous)
------	--

90 W	<ul style="list-style-type: none">• 5.62 A (maximum at 4-second pulse)• 4.62 A (continuous)
------	--

130 W	6.70 A (continuous)
-------	---------------------

Rated output voltage	19.5 +/- 1.0 VDC
----------------------	------------------

Dimensions:

65 W:

Height	28.30 mm (1.11 inches)
--------	------------------------

Width	137.20 mm (5.40 inches)
-------	-------------------------

Depth	57.80 mm (2.27 inches)
-------	------------------------

90 W:

Height	22.60 mm (0.88 inch)
--------	----------------------

Width	147.00 mm (5.78 inches)
-------	-------------------------

Depth	70.00 mm (2.75 inches)
-------	------------------------

AC Adapter

130 W:

Height	25.40 mm (1.00 inch)
Width	154.70 mm (6.09 inches)
Depth	76.20 mm (3.00 inches)

Temperature range:

Operating	0 °C to 35 °C (32 °F to 95 °F)
Non Operating	-40 °C to 65 °C (-40 °F to 149 °F)

Physical

Vostro 3350:

Height	27.30 mm to 29.80 mm (1.07 inches to 1.17 inches)
Width	329.20 mm (12.96 inches)
Depth	228.50 mm (9.00 inches)
Weight (Minimum)	2.04 kg (4.50 lb)

Vostro 3450:

Height	30.60 mm to 33.20 mm (1.20 inches to 1.31 inches)
Width	343.00 mm (13.50 inches)
Depth	245.80 mm (9.68 inches)
Weight (Minimum)	2.28 kg (5.02 lb)

Vostro 3550/3555:

Height	30.40 mm to 34.80 mm (1.20 inches to 1.37 inches)
Width	375.40 mm (14.78 inches)
Depth	260.20 mm (10.24 inches)
Weight (Minimum)	2.47 kg (5.45 lb)

Vostro 3750:

Height	30.80 mm to 34.80 mm (1.21 inches to 1.37 inches)
--------	---

Physical

Width	418.40 mm (16.47 inches)
Depth	286.70 mm (11.29 inches)
Weight (Minimum)	3.00 kg (6.62 lb)

Environmental

Temperature:

Operating	10 °C to 35 °C (50 °F to 95 °F)
Storage	-40 °C to 65 °C (-40 °F to 149 °F)

Relative humidity (Maximum):

Operating	10 % to 90 % (noncondensing)
Storage	5 % to 95 % (noncondensing)

Airborne contaminant level

G1 or lower as defined by ISA-S71.04–1985

Contacting Dell



NOTE: If you do not have an active Internet connection, you can find contact information on your purchase invoice, packing slip, bill, or Dell product catalog.

Dell provides several online and telephone-based support and service options. Availability varies by country and product, and some services may not be available in your area. To contact Dell for sales, technical support, or customer service issues:

1. Visit **support.dell.com**.
2. Select your support category.
3. If you are not a U.S. customer, select your country code at the bottom of the page, or select **All** to see more choices.
4. Select the appropriate service or support link based on your need.

